

NOTES

Getting Here

Gardenstown is a dramatic and unspoiled fishing village 8 miles east of Macduff. The B9031 goes past the road into the village. For 273 bus times from Banff (not Sundays) please go to www.aberdeenshire.gov.uk/publictransport/timetables.



Image credit: Caledonian Images

Parking

Parking is available at New Ground, to the east of Gardenstown beyond industrial units and at the start of the footpath to Crovie. The traditional nature of the village means that parking is limited, but you will find spaces elsewhere - please be aware of access for residents. Some parking is possible on the roadside down from the Church and by the harbour, particularly near the Harbour toilets. If you are new to the village we suggest you do not drive along the sea-front to Seatown, it is narrow and difficult to negotiate. Please be aware that both Main Street and High Street are cul-de-sacs with no parking on High Street.

Disabled Access

Due to the traditional nature of the village, and the buildings, few venues are very access friendly. However, volunteers at the venues will try their best to assist visitors where possible. Please note that some Venues are approached only by stairs - Venues 5, 6, 7, 11, 12

For further information on the area, try going to:
www.discovergardenstown.co.uk
www.banffshirecoast.com/gardenstown

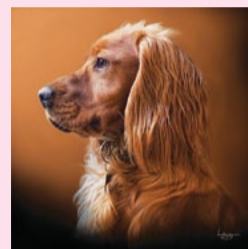


Follow the event on Facebook at:
www.facebook.com/gamriecreatives

gamrie creatives

A weekend of arts and crafts
exhibitions and activities in Gardenstown

Friday 12th to Sunday 14th
August 2016



'Calm Bay' - a two colour lino print of Gardenstown by Bryan Angus

WELCOME

Welcome to the third Gamrie Creatives event.

Everyone listed here either lives, works or holidays in Gardenstown and the surrounding area, and we are all inspired by the beauty of the land and sea. You'll find artists, designers and makers showing a hugely diverse range of creativity.

Food and Drink

Note - opening times here are for 12th to 14th August, they may vary beyond those dates.

Venue 8. Garden Arms Hotel

Opening Times: 12noon to 5pm Fri and Sat. Sun 12pm to 3pm.

Tel: 01261 851260

www.gardenarms.co.uk

E: enquiries@gardenarms.co.uk

Venue 13. Teapot 1

Opening Times: 8.30am to 4pm, Thursday to Monday.

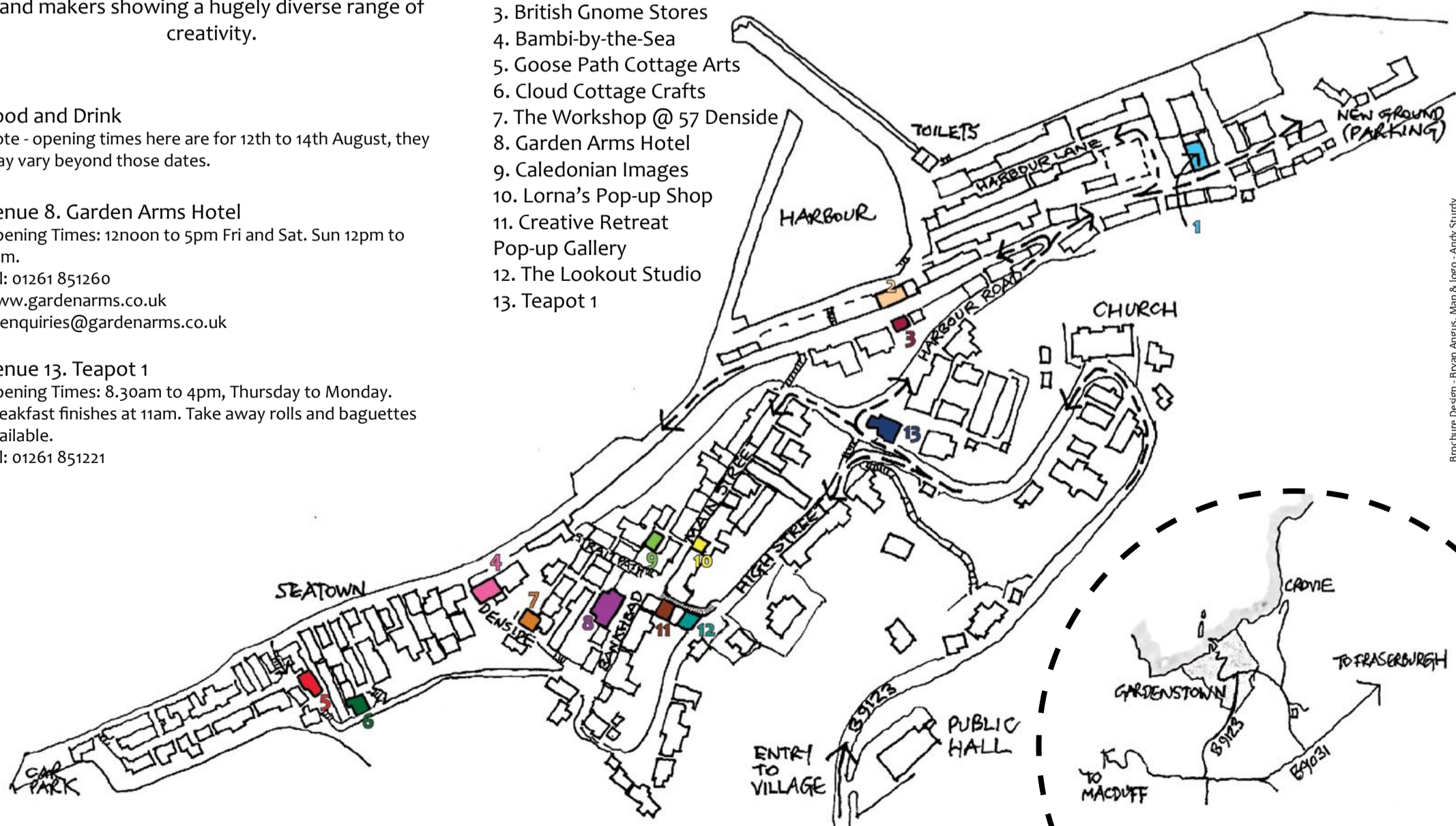
Breakfast finishes at 11am. Take away rolls and baguettes available.

Tel: 01261 851221

Venue Key

Please note, not all venues are showing exhibitions, some are for timed activities or are for food and drink. Have a look overleaf to see what is going on where.

1. New Ground Gallery
2. The Salmon House
3. British Gnome Stores
4. Bambi-by-the-Sea
5. Goose Path Cottage Arts
6. Cloud Cottage Crafts
7. The Workshop @ 57 Denside
8. Garden Arms Hotel
9. Caledonian Images
10. Lorna's Pop-up Shop
11. Creative Retreat
12. The Lookout Studio
13. Teapot 1



gamrie creatives

**Friday 12th to Sunday 14th
August 2016**

Venue 1

New Ground Gallery

Opening times: 12.30 am
to 5pm, Fri to Sun

On offer are a wide
selection of hand crafted
items, created in the village

and locally (within 35 miles
of Gardenstown). Including semi-precious stone jewellery,
funky polymer clay buttons, upcycled denim with a tartan
twist, hand-knits, lace shawls, fabric bags, hand-spun yarns
and an eclectic mix of paintings. Organic, naturally scented
soaps, massage oils and skin creams are some of the most
popular sellers - as well as delicious Portsoy ice cream.

Tel: 01261 851339



Venue 2

The Salmon House

Harbour Road

Performance times: 1.30 - 4pm Sat
and Sun

Let Bach remind you why it's great
to be alive! Follow the footsteps of
Bach with the extraordinary Cello
Suites as played by Gareth John –
music that takes us through calmness
and sorrow; heartbreak to triumph;
spiritual solace to unbridled joy.
Share the journey in the informal and
relaxed surroundings of Gareth's
home. Although the performance lasts over two hours,
each dance lasts only a few minutes so take in as much as
you want. Refreshments served during interval.



Venue 3

British Gnome Stores

Harbour Road

Opening times: 10am to
4pm, Fri to Sun

The British Gnome Stores
has a collection of local
crafts and goods including
model boats, miniature
creels and of course gnomes.

Tel: 01261 851618



Venue 4

Bambi-by-the-Sea

55 Denside, AB45 3ZS

Opening times: 10am
to 4pm, Fri to Sun

'Bambi-by-the-Sea'
is the label behind a
collection of up-cycled
and re-cycled textiles for
you and your home. All
items are produced from vintage linens, embellished fabric,
re-cycled yarn and woven tartans. Items include bunting,
patchwork throws, cushions, dog collars, baby and toddler
wear, scarves, gloves and bags. Prices from £5 to £150.
Please note all items are original, nothing can be repeated.
When purchasing something by 'Bambi-by-the-Sea', you are
purchasing an original treasure of the future.
Email: mick1122@btinternet.com
Tel: 01261 851846



Venue 5

Lorraine Toal

Goosepath Cottage
Arts

22 Seatown AB45 3YQ

Opening times: 10am to
4pm, Fri to Sun

Lorraine's work this year
is mainly in acrylic and ink,
incorporating sea glass and pebbles, with experiments in
mixed media - which gives an unusual vibrant and colourful
3D effect. Inspired by the beautiful coast you'll see local
landscapes of Crovie, Gardenstown, with rural and sea
views, highland cows and ink sketches of local streets.
Tel: 01261 851337



Venue 6

Cloud Cottage Crafts

Cloud Cottage,

Seatown

Opening times: 10am
to 4pm, Fri to Sun

This year Cloud Cottage
Crafts are offering a
new collection of driftwood for the home and garden.
Gifts ranging from mirrors, garlands, planters and pots to
plaques and even a totem pole or two!
Tel: 01261 851250



Venue 7

The Workshop @ 57 Denside

Opening times: 10am to 4pm, Fri
to Sun

A range of handcrafted jewellery
using sterling silver, copper, semi-
precious stones and Catriona's
own handmade lampwork beads.

Each unique piece is made using
traditional tools and techniques.

Tel: 07749449319

Email: catriona@dilkusha.org.uk



Venue 8

The Garden Arms Hotel &
Gallery

69 Main Street

Opening times: 12pm to
5pm Fri and Sat.

Sun 12pm to 3pm.

A friendly, contemporary
display of local arts and crafts
is open for the third year of
Gamrie Creatives. Showcasing
a colourful array of work
including paintings, pottery,
textiles, multimedia, photography and handmade jewellery.

For this weekend only lunch is available, so drop in to view
and have lunch while you're there !

Web: www.gardenarms.co.uk

Tel: 01261 851260



Venue 9

Caledonian Images

88 Main Street,

AB45 3YP

Opening times: Fri and
Sat 11am to 4pm, 1pm to
4pm Sun

Caledonian Images
showcases a large
selection of photographs mostly of the local area, both in
black and white and colour. Also to be found here is a wide
range of photo gifts including key rings, fridge magnets and
cards.

Tel: 01261 851752



Venue 10

Lorna's Pop-Up
Shop

92 Main Street

Opening times: 10am
to 4pm, Fri to Sun

The pop-up shop
will be stocked with
Lorna's artwork and
from a number of guests. There will also be a variety of
hand-made items and a few last minute surprises.



Venue 11

Creative Retreat

Pop-up Gallery

Bryan Angus - Paintings
and Prints

The Creative Retreat Gallery,
end of Main St

Opening times: 10am to
4pm, Fri to Sun

Bryan is showing paintings,
pastels and prints, many
of which are of the local area which is an endless source of
inspiration. Some artworks come from his weeks teaching
in Gardenstown throughout the year at The Creative
Retreat.

Web: www.bryanangusart.com

www.creative-retreat.co.uk

Tel: 01261 812276



*If you would like to be involved with Gamrie Creatives next year,
just get in touch, we'd love to hear from you. Message us on
Facebook, or contact any one of the members you see listed here.*

Venue 11

1 on 1 Imaging

The Creative Retreat

Pop-up Gallery, end
of Main St

Opening times:
10am to 4pm, Fri to
Sun

A fresh approach to
studies of animals
through specialist
development of Fine
Art Photography
invokes that 'Wow' factor. "How do you do that?", or "Is
that a painting?", is frequently asked. Commissions booked
during Gamrie Creatives earn 20% discount off the list price.
A selection of prints also on sale.

Telephone: 07826 599 267

Email: info@1on1imaging.net

Web: www.1on1imaging.com



Venue 11

Jane Bayliss

The Creative Retreat

Pop-up Gallery, end of
Main St

Opening times: 10am
to 4pm, Fri to Sun

Jane designs and
makes stained glass
windows for private
houses, Churches and
other public buildings from her studio in Hatton of Fintray.
Jennifer-Jane Stained Glass Ltd.
www.jenniferjanestainedglass.co.uk



Venue 11

Millshore Pottery

The Creative Retreat

Pop-up Gallery, end of
Main St

Opening times: 10am
to 4pm, Fri to Sun

Millshore Pottery
specializes in hand-
thrown stoneware
pottery with an
emphasis on Crystalline
glazes, and the dramatic
effect when two glazes
react with each other. Lynn's workshop is located in the old
byre of Mill of Nethermill which sits in a secluded bay by the
village of Pennan.
www.facebook.com/millshore.pottery/



Venue 12

Gunnar Olafsson

The Lookout Studio
High St

Opening times: 10am to
4pm, Fri to Sun

For six years Gunnar has
been learning painting
techniques from Irish artist
Philip Gray - presently he is
dividing his time working
professionally as studio assistant with Philip in Kinsale, as
well as in his own 'Lookout Studio'. The key characteristic of
Gunnar's work is a focus on light and a free, bold handling
of paint. This gives rise to fluid movement and dramatic
seascapes. For the last year Gunnar has been working with
perspective in triptych format and also studying the effects
of heavily primed and textured canvases, using impasto
media, moulding paste and sand. Gunnar needs go no
further than his studio window for inspiration, so why not
come along and see for yourself.
www.gunnarolafssonart.com
Tel: 01261 851588



Venue 13

Teapot 1

139 Blairmore
Villa

Opening times:

8.30am to 4pm

Enjoy breakfast,

lunch, afternoon

teas, homebakes

and ice creams,

and see a selection of art and crafts on display. Enjoy al
fresco dining in the garden, weather permitting, and enjoy
stunning views across the harbour - or take away filled rolls
and baguettes.

Tel: 01261 851221

